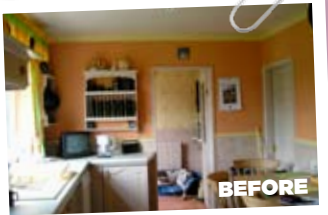


## PROPERTY PROJECT

# Country-style kitchen

Helen and Fred Parkes created a practical and sociable family kitchen



### WHO LIVES THERE

Helen and Fred Parkes and Lucinda, 13

### WHERE IS IT?

Tealby, Lincolnshire

### WHAT THEY DID

Knocked through the kitchen and dining room wall, extended into the garden to create a cloakroom area in the kitchen.

**T**he kitchen in our four-bedroom, 1800s cottage was quite dated when we moved in six years ago. We wanted to put our own stamp on the house and turn the kitchen into a larger space that would be better suited to our lifestyle. As we spend a lot of time outdoors, I wanted a practical kitchen that could be used for entertaining, too. Knocking the kitchen and dining room together and adding an extension has provided extra space. A cloakroom entrance from the outside



to the kitchen really works for our family, and the furniture looks great with the units. The completed look is so fresh – it was well worth the all the hard work.

**Helen Parkes**



## THE PROJECT BRIEF

■ The Parkes had a wall removed between the existing kitchen and dining room. They also decided to extend into the garden to increase the size. A door leading into the garden was blocked up to make room for the new dining area and the existing kitchen window was replaced with French doors leading out to the garden.

■ The building work was project managed and carried out by Millcraft Interiors. The Parkes found using one company to do all the work made the process smoother and easier.

■ A walk-in pantry was created out of a cupboard in the old dining room. It has panelled walls and wood shelves for storage.

■ The new units now stand in part of the old dining room, and the new dining area and fridge freezer are in the old kitchen area, either side of the French doors.



## Bold colour injection

Neutral units and work surfaces offset the brightly painted walls.

English Revival bespoke **dresser**, from £4,950, with cube **handles**, £6.50 each, English Revival ready to paint W60cm **units**, from £395, all Millcraft Interiors, **painted** in Pointing oil eggshell, £38 per 2.5ltr, Farrow & Ball. Solid **oak worktop**, £125 per linear m, Deralam. Bespoke African Black Lapato **granite worktop**, £613.63 per linear m, Millcraft Interiors. Bolero stainless-steel undermounted **sink**, £316.04, Franke. Vixo **tap**, £239, Abode. **Walls** in Mischief Acrylic matt emulsion, £22.51 per 2.5ltr, The Little Greene Paint Company. American-style **fridge freezer**, K3990, £1,867.53, Neff

## WHAT THEY DID WELL...

### ■ Chimney breast

A structural engineer advised on widening the original fireplace to house the new range cooker, and furniture was designed around it.

### ■ Stylish tiles

For a country-style look, slate or limestone tiles are a good choice, but they need regular care, so Helen opted for

porcelain tiles in a finish that adds to the overall look.

### ■ Island unit

The island unit incorporates a dishwasher, microwave and a sink, so it's functional as well as being a social area.

### ■ Design direction

An individual look has been created with bench seating,

a hall stand and dresser. The freestanding furniture has a unified look with similar shapes and matching paint colours as the fitted units.

### ■ Cloakroom

Helen and Fred keep horses, so a separate entrance into a cloakroom area in the kitchen with space for seating and to store footwear is very useful for the family, and prevents the kitchen floor becoming a muddy walk through space.

## WHAT IT COST

Bespoke kitchen units  
£20,221

Work surfaces £2,625

Appliances £8,503

Flooring £1,750

Sink and tap £624

Paint (walls and furniture)  
£1,450

-----  
**KITCHEN TOTAL: £35,173**



### Dine in style

The dining table with bench seating provides a great social dining space.

Bespoke **table** and **benches**, £2,500, Millcraft Interiors. **Cushions** in Viola and Portia, both £28 per m, Fleur collection at Harlequin. **Satin Ribbon metal sculpture**, £395, Dragonfly Home

## CREATING A DINING AREA

Find a space for the family to tuck into meals

- Not everyone has space for a separate dining room, so it's good to have a table to gather around in the kitchen. If your kitchen is tight on space, consider having a breakfast bar or a wide shelf fixed to the wall on brackets with stools beneath.
- Bench seats fitted into a corner or nook are a good alternative to a table and chairs. Ask a joiner for a made-to-measure version or try Lawton Imports (01268 769444; [www.lawton-imports.co.uk](http://www.lawton-imports.co.uk)), who also specialises in American diner furniture.
- Plastic and folding chairs are good for smaller spaces and can be hooked to the wall, or the back of a door when not in use or neatly stacked away. For a similar look to the Parkes' kitchen, try Ikea's Alve storage bench (0845 355 1144; [www.ikea.co.uk](http://www.ikea.co.uk)).
- Make a focal point of your dining area by hanging a pendant lamp or even a row of three over a dining table, and place a rug that coordinates with key kitchen colours beneath the table. To lift a plain or neutral kitchen design, paint one wall in a bold colour or simply add accessories using one or two key colours.



### Extra seating

A raised shelf creates a mini breakfast bar with seating on the island unit.

Feature **wine rack** and **raised wood shelf**, £1,200, Lloyd Loom **bar stools**, £275 each, both Millcraft Interiors



### Seamless style

A retractable plug socket is a practical feature that stays hidden when not in use.

EVOline **retractable three socket** power port in aluminium effect, from £106.92, [Worktoppower.co.uk](http://Worktoppower.co.uk)



### Grand entrance

In the cloakroom area, a bespoke hall stand provides a practical space for hanging coats and changing muddy shoes.

Cloakroom **hall stand** with seating £1,750, Millcraft Interiors



'A bespoke kitchen is ideal for period homes, as furniture can be designed in keeping with the original joinery.'

**Corrine Mill, designer and director, Millcraft Interiors**

## Function & style

Helen and Fred have successfully created a country-style family kitchen with a modern twist.

Prestbury fabric **bench**, around £538.29, Laura Ashley. **Cushions** in Viola and Portia, both £28 per m, Fleur collection at Harlequin. Italian porcelain **tiles** in Calvert, £35, per sq m, Millcraft Interiors. Aga 6.4 S-series **range cooker** with ceramic hob in Black, from £3,910, Aga Rayburn. Integrated **microwave** M8151-1, £695, Miele

### GETTING STARTED...

■ Choose a kitchen retailer who is a member of the Kitchen Bedroom Bathroom Specialists Association ([www.kbsa.org.uk](http://www.kbsa.org.uk)). All members are vetted and offer deposit protection schemes. Download their free

kitchen guide for detailed planning advice. ■ Any building work must comply with building regulations, and you may need planning permission. Find out more from your local council, or

visit [www.planningportal.gov.uk](http://www.planningportal.gov.uk). ■ The Building Services Guide ([www.buildingserviceguide.com](http://www.buildingserviceguide.com)) has articles on planning and you can find help with your project by trade or by area.