



**SHOWER**

A contemporary shower gives the bathroom a modern look, while the green-tiled panel creates an interesting focal point.

# An ensuite *transformed*

Once dull and old-fashioned, this bathroom has been given a fresh modern look

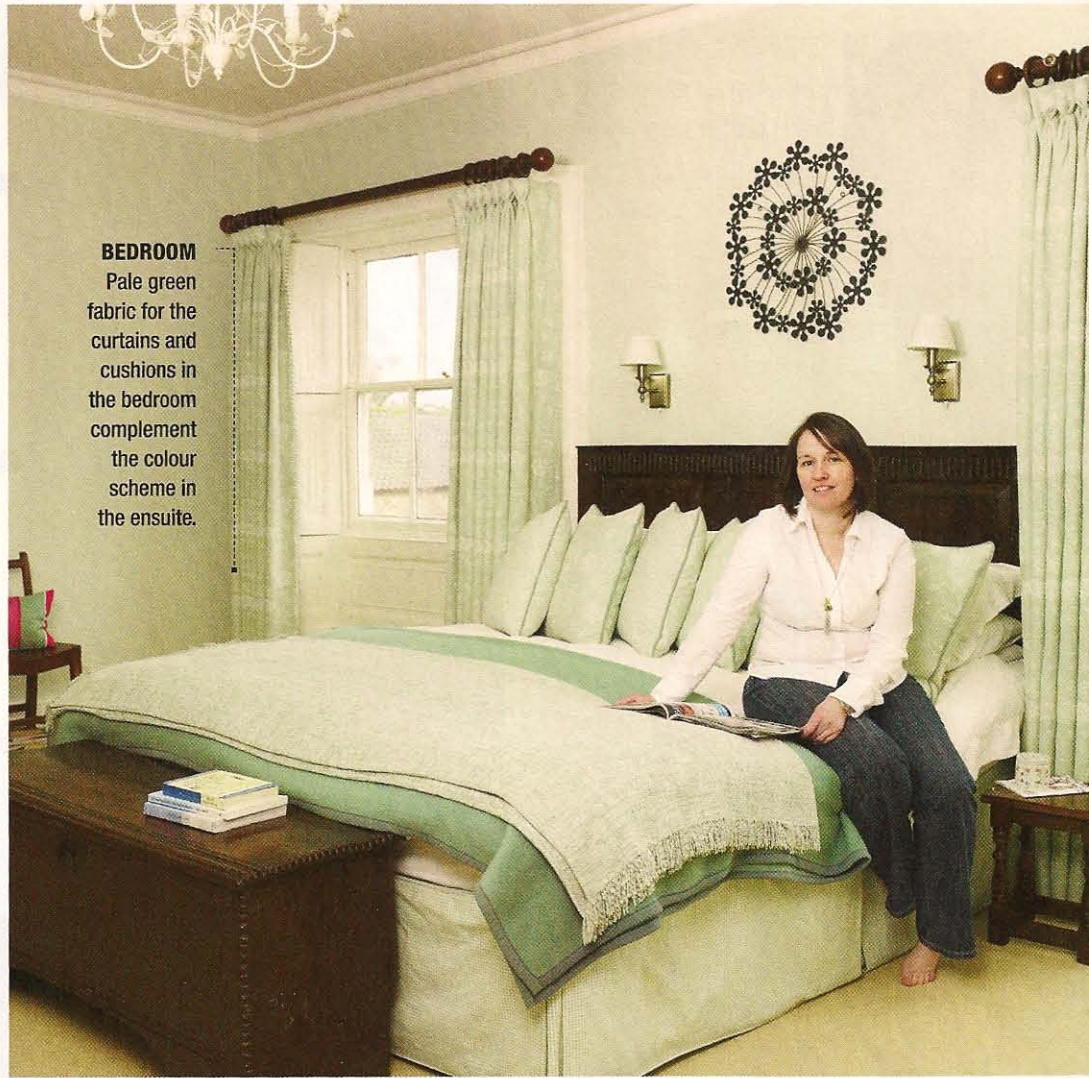
WORDS TAMSIN WESTON PHOTOGRAPHY RACHAEL SMITH

**WALL TILES**

Contrasting large format white tiles with smaller green glass ones is a good way to highlight key areas and add overall interest to the room.

**BEDROOM**

Pale green fabric for the curtains and cushions in the bedroom complement the colour scheme in the ensuite.



**PATSY PARKHOUSE** and her husband **GRAEME**, both 44, live with their three children, Jamie, 16, Poppy, 14, and Louisa, 13, in a four-bedroom detached Georgian house that was formerly a rectory, in Market Rasen, Lincolnshire. At first, the whole family shared the main bedroom's ensuite, but three years ago, when a new bathroom was installed for the children to use, Patsy and Graeme decided it was time to decorate the ensuite to match their bedroom.

The bathroom was long and narrow, and may have been a dressing room when the house was built. A chimney breast in the middle of the room was a challenge to incorporate into the fresh, modern look they wanted.

On the recommendation of friends, the couple asked



**The built-in cupboards and dreary scheme needed updating** a local bathroom and kitchen designer to plan the design and organise the fitting. The designer found space for two basins and a storage cabinet on the chimney breast, with the bath spanning one end of

the room. At the other end, a shower area was created by moving an immersion heater and getting rid of an airing cupboard. Hanging specially made mirrors on the upper walls made the narrow space feel wider, reflecting more light into the room. Green glass tiles were used as edging and panels, contrasting with the larger white tiles.

In their bedroom, Patsy kept the existing furniture but painted the walls in an eau de nil shade and installed a neutral velvet carpet. She also added pale green upholstery and bedlinen to complement the colours in the ensuite.

● **Contact the Parkhouses' bathroom designer Corrine Mill at Millcraft Interiors on 01673 844439 or visit [millcraft-kitchens.com](http://millcraft-kitchens.com)**

CONTINUED OVER PAGE



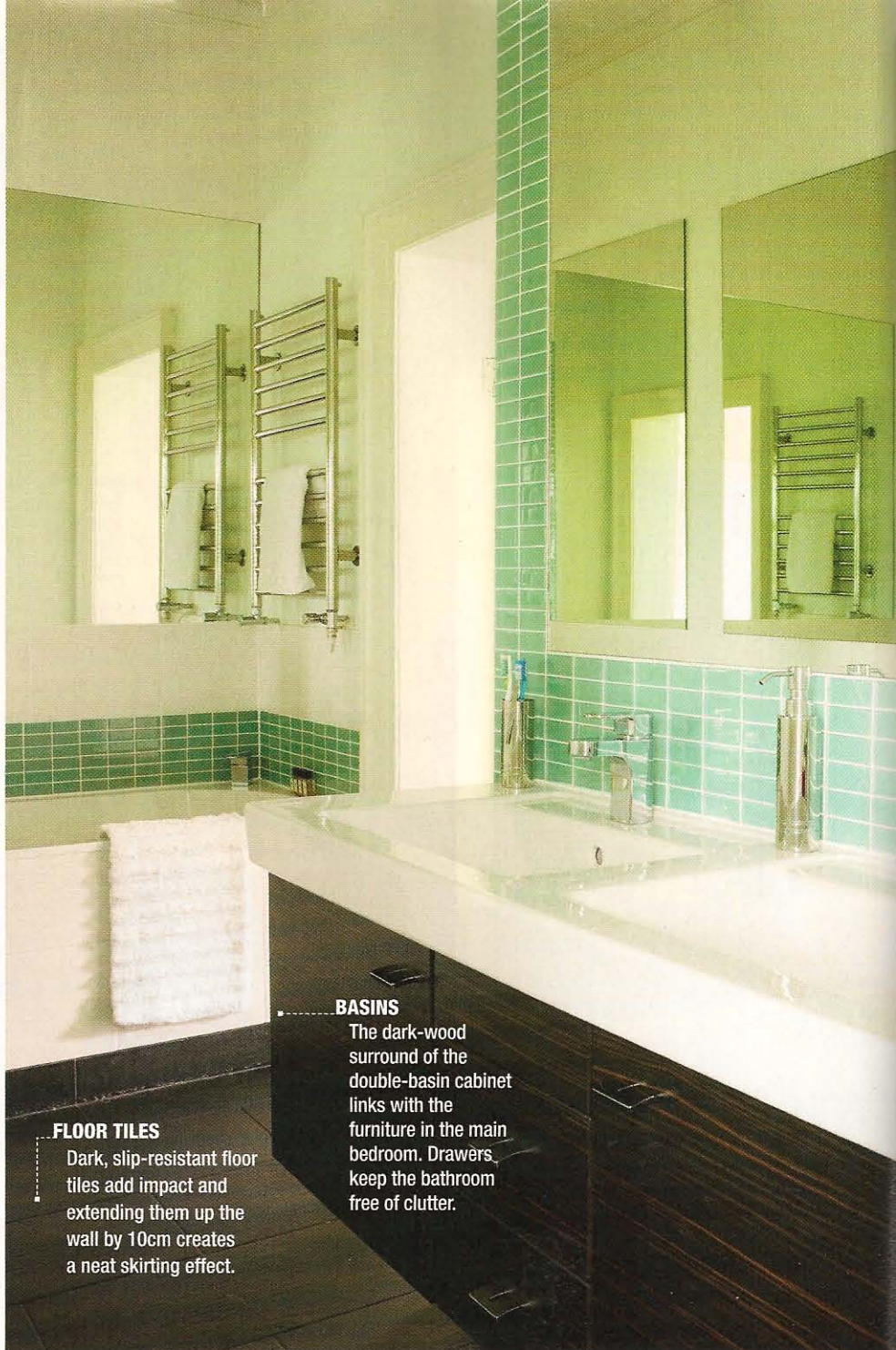
**FINAL VERDICT**

'Having a bathroom refurbished can be stressful and we found it was better to work with one company rather than try to organise all of the different elements ourselves,' says Patsy



**CABINET**

Mirrors, placed around the room, help to make the space seem larger and more airy.



**BASINS**

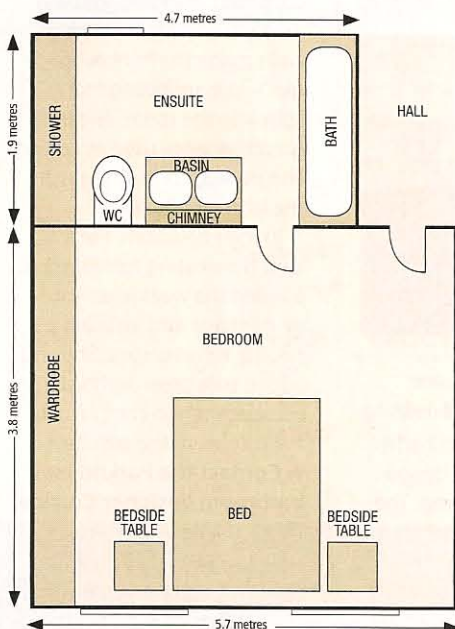
The dark-wood surround of the double-basin cabinet links with the furniture in the main bedroom. Drawers keep the bathroom free of clutter.

**FLOOR TILES**

Dark, slip-resistant floor tiles add impact and extending them up the wall by 10cm creates a neat skirting effect.

**Bathroom floorplan**

The long, narrow space has been turned into a practical ensuite that complements the bedroom



**What it cost**

**Ensuite**

Paint .....	<b>£45.46</b>
Floor tiles .....	<b>£180</b>
Wall tiles .....	<b>£1235</b>
Bath and filler .....	<b>£857.57</b>
Basin unit and taps .....	<b>£2120.89</b>
Shower .....	<b>£1680.20</b>
WC .....	<b>£729.29</b>
Mirrors .....	<b>£293</b>
Towel warmer .....	<b>£862</b>
<b>Total .....</b>	<b>£8003.41</b>

**Bedroom**

Paint .....	<b>£38.98</b>
Carpet .....	<b>£974.70</b>
Fabric .....	<b>£1319.20</b>
<b>Total .....</b>	<b>£2332.88</b>

**Shopping list**

**Walls** painted in Absolute White Light and Space rich matt emulsion, £22.73 for 2.5L, Dulux. **Wall tiles** in White Bretagne, £78.34 a square metre, Villeroy and Boch. **Mosaic tiles** in SPGA Aqua, £202.83 a square metre, Johnson Tiles. Subway double **basin unit**, £731.17; Central Line **vanity unit** in Macassar, £937.36; Oberon **bath**, £618.58; Subway close-coupled **WC pan**, £338; **cistern**, £207.95; **seat**, £183.34; all Villeroy and Boch; Life basin **taps**, £226.18 each; Life side **bath filler**, £238.99; Life **shower system**, £829.20; all Vado range; **shower screen** 501, £851, Huppe range; all Millcraft Interiors. **Towel warmer**, £862, SBH. Royal 30 **mirror cabinet**, £489, Keuco. Ceramic **floor tiles**, £30 a square metre, Rak Ceramics. Made-to-measure **mirrors**, £293, Bridgewater Glass. **Bedroom walls** painted in Woodland Pearly 6 matt emulsion, £19.49 for 2.5L, Dulux. Finepoint Leighton Canvas **carpet**, £45 a square metre, Brintons. For similar **cushions** and **curtain fabric**, try Elyan embroidered silk/viscose in Duck Egg, £68 a metre, fabricsandpapers.com

FOR STORE DETAILS SEE 'WHERE TO BUY' PAGE AT BACK OF ISSUE